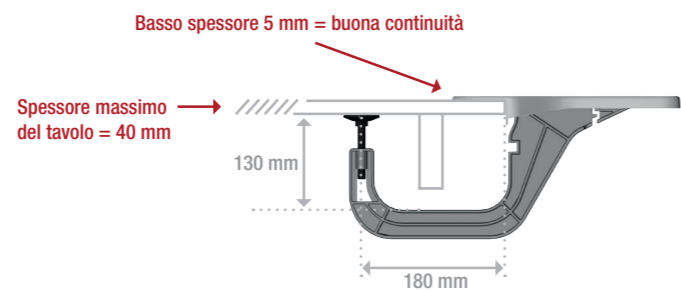
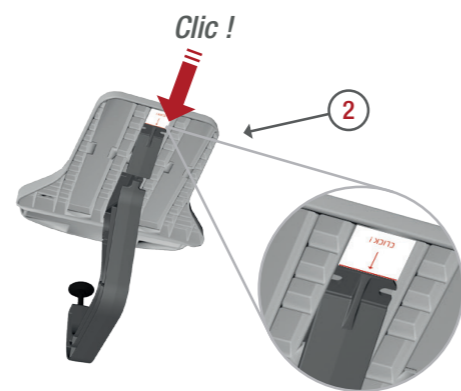
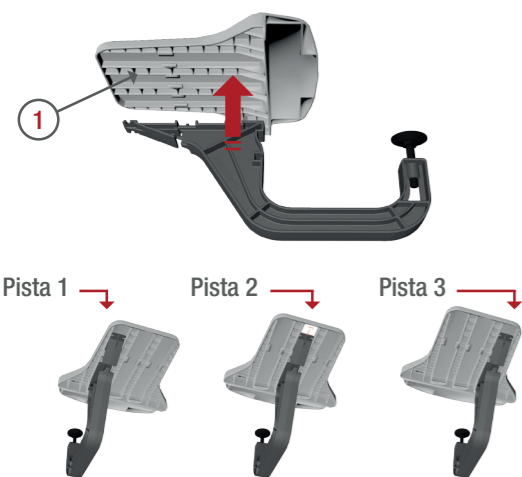


# JUMBOREST Istruzioni per l'uso



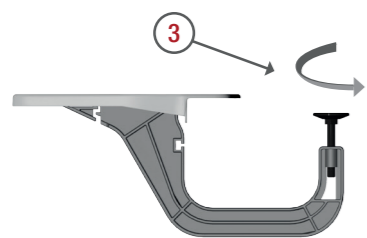
1. Allineare le tacche del braccio nei buchi del tavolino (Pista 1, 2 or 3 in funzione della tua carrozzina)

2. Fare scorrere il braccio nella pista del tavolino **fino allo "Clic"**



3. Fare girare la vite regolabile in un senso o nell'altro per regolare in funzione dello spessore del tavolo

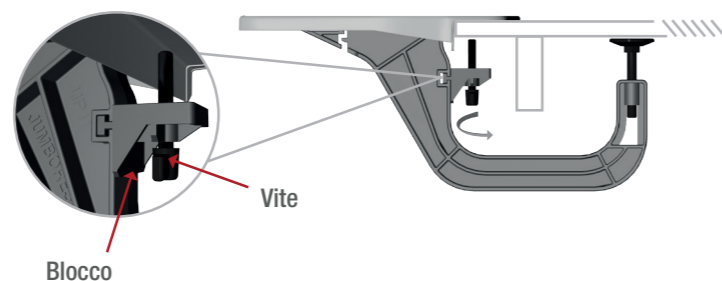
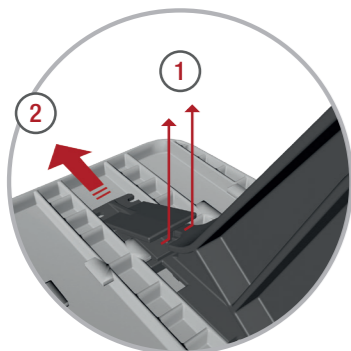
4. Montare JUMBOREST sul tavolo



Se necessario, tirare JUMBOREST fuori e regolare di nuovo la vite

5. Smontare JUMBOREST

6. Bloccaggio opzionale: inserire il blocco all'uopo previsto e regolare la vite

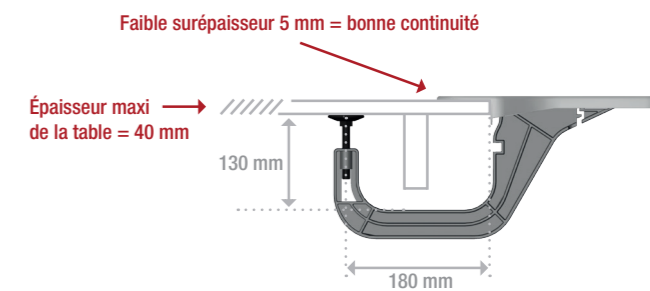
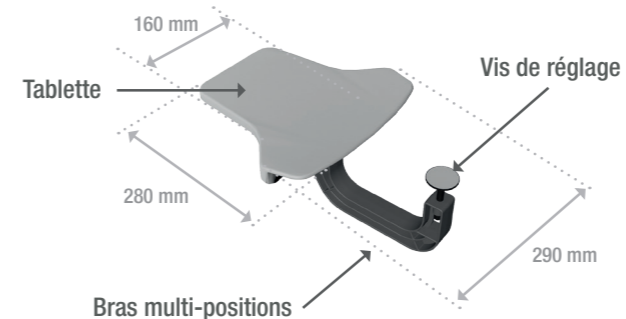


1. Tirare sull'estremità del blocco per liberare il clip  
2. Fare scorrere il braccio per staccare le tacche

Blocco

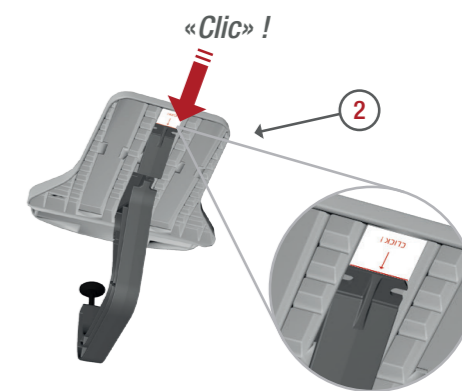
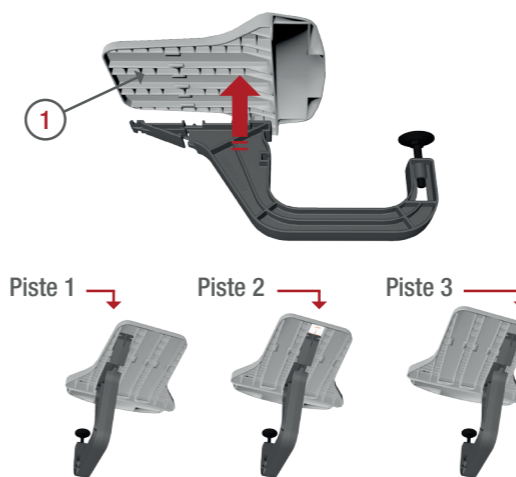
Vite

# Notice d'utilisation JUMBOREST



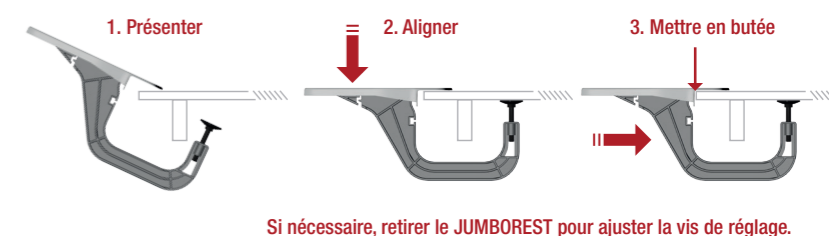
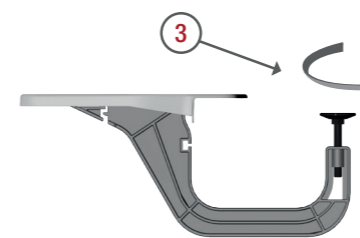
1. Aligner les crans du bras, dans les logements de la tablette. Piste 1, 2 ou 3.

2. Faire coulisser le bras dans la glissière de la tablette **jusqu'à obtention du «Clic»!**



3. Tourner la vis de réglage dans un sens ou dans l'autre afin de l'ajuster à l'épaisseur de la table souhaitée.

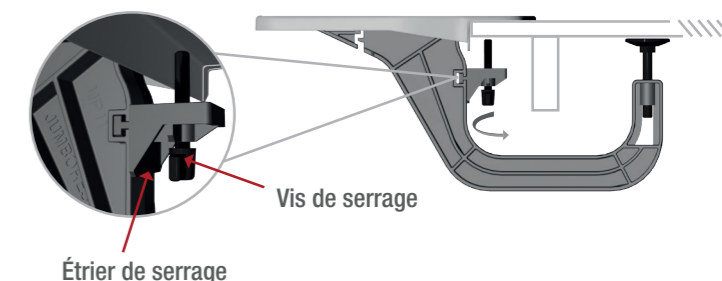
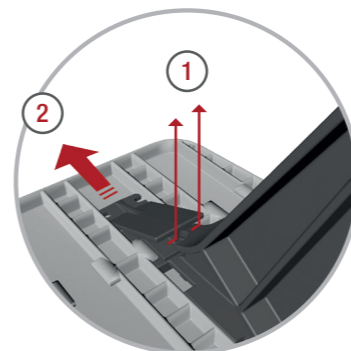
4. Installer le JUMBOREST sur la table.



Si nécessaire, retirer le JUMBOREST pour ajuster la vis de réglage.

5. Démonter le bras pour rangement.

6. Option verrouillage (uniquement sur demande)  
Insérer l'étrier dans le logement prévu à cet effet et serrer la vis.

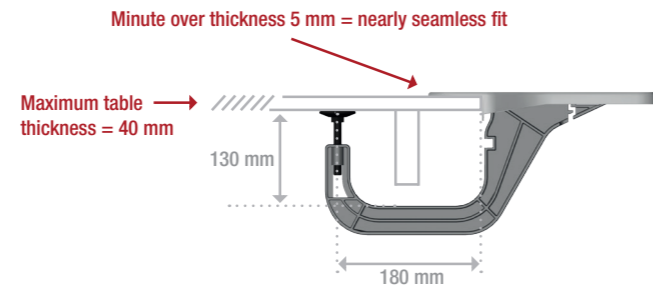
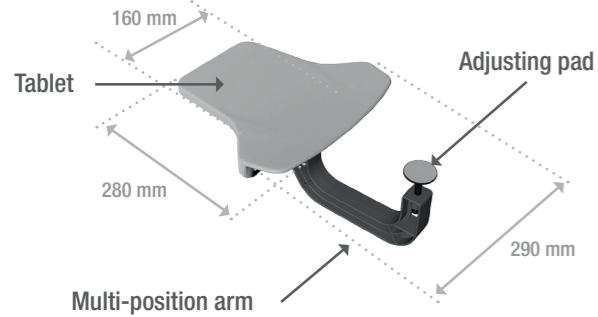


1. Tirer sur l'extrémité du verrou pour libérer le clip  
2. Faire coulisser le bras pour dégager les crans

Étrier de serrage

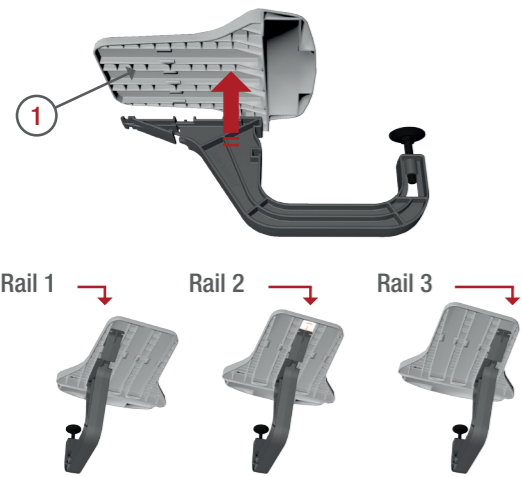
Vis de serrage

# JUMBOREST Instructions for use



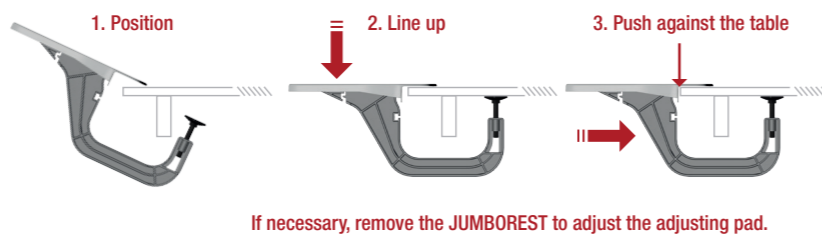
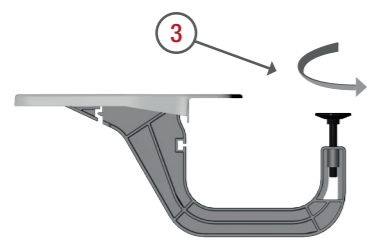
1. Line up the arm's notches in the tablet's slide rail. (Rail 1, 2 or 3 to adjust to your chair)

2. Slide the arm in the tablet's sliding rail **until obtaining a Click!**



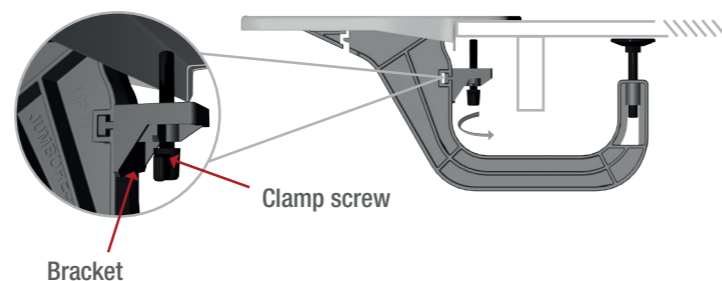
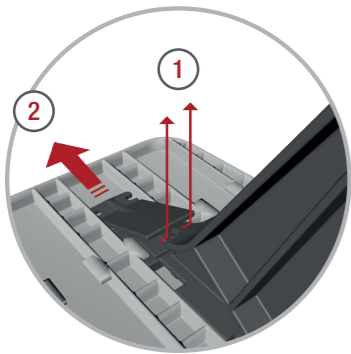
3. Screw the adjusting pad in either direction to fit table thickness.

4. Fix the JUMBOREST to the table



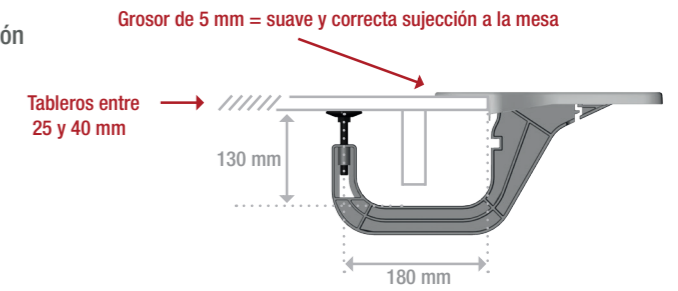
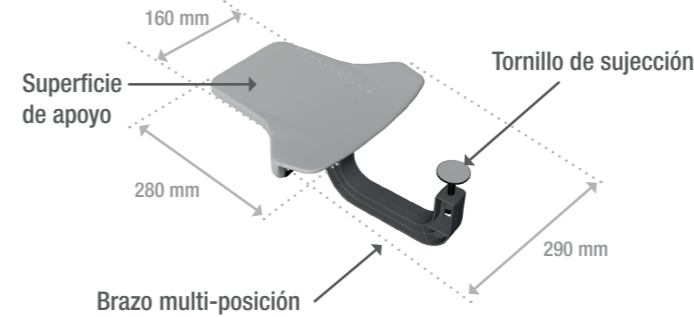
5. Disassemble the arm for storage

6. Lock option (on request only)  
Insert the bracket notch into the groove and tighten the clamp screw



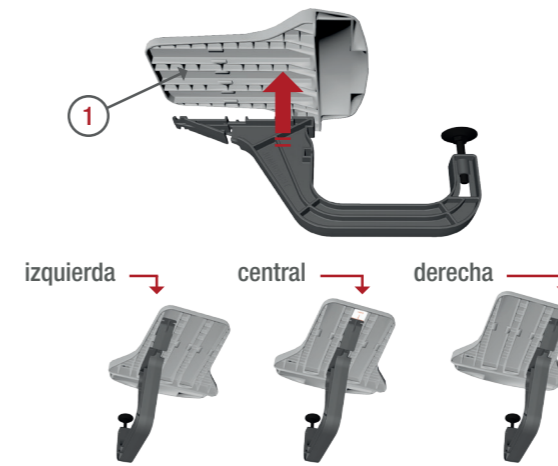
1. Pull on the end of the lock to release the clip  
2. Make the arm slide to release the notches

# Apoyabrazos JUMBOREST Instrucciones de uso



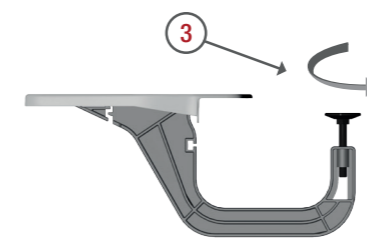
1. Alinear el extremo del brazo multi-posición en su alojamiento en la parte inferior de la superficie de apoyo (en posición izquierda, central o derecha)

2. Presionar el brazo contra su alojamiento **hasta oír un "click"**



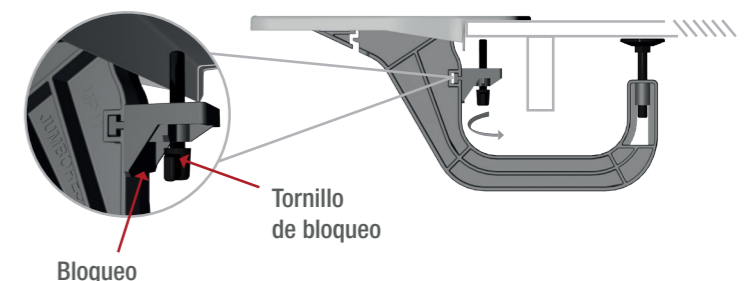
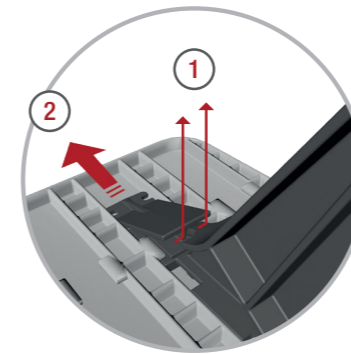
3. Girar el tornillo de sujeción hasta ajustarlo al grosor de la mesa

4. Colocar el apoyabrazos en el borde de la mesa



5. Para desmontar:

6. Bloqueo opcional: insertar el tornillo de bloqueo en el alojamiento previsto en el brazo y apretarlo contra el tablero de la mesa



1. Tirar hacia fuera de la pieza del extremo del brazo  
2. Deslizar el brazo separándolo de la superficie de apoyo

Tornillo de bloqueo  
Bloqueo